

NEW JCB 130



PRODUCTIVE IN EVERY WAY

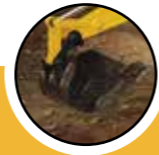
Gross engine power: 60kw (80hp) | Bucket capacity: 0.5 - 0.65 cu.m | Max. operating weight: 12,800 kg



TOP 5 BENEFITS FOR YOU



Reliability & Durability
Durable heavy duty structure and high quality components



High output
Excellent digging force & productivity



Leading fuel efficiency
Powered by JCB ecomax engine



Best operator comfort
Large cab, low effort joystick and new improved operator seat



Low on maintenance
Hydraulic oil change interval of 5000 hrs (bucket operation)



STAY CONNECTED 24x7

*T&C Apply

MOST RELIABLE PARTNER



Durable upper frame : Rugged construction of upper frame provides durability in tough working conditions.



Heavy duty X-frame with strengthened idler mounting area for high life in tough strata. Belly guard to protect hydraulic components from external damage.



Reinforced boom : Deep section design, reinforced base area and cylinder mounting area for higher strength.



Strengthened arm : Strengthened boom joint and bucket joint area. Additional plate provided at bottom for damage protection.

IP67-69 dust & water proof connectors for electrical harness for high reliability of electricals.



Powered by
JCB ENGINE ecomax



Reliable



Long Life



High Power



Low Maintenance Cost



Low Noise & Vibration



Environment Friendly

BEST IN FUEL EFFICIENCY

JCB ecoMAX engine designed specially for construction equipment provides high fuel efficiency and generates high torque at low speeds to suit various job needs.



Choice of **Productivity (P) & Economy (E)** modes :

E :Economy mode - For fuel saving with optimum productivity.

P : Productivity mode- Increased productivity through pump flow when higher output is required.

Auto idler for fuel saving during engine idling at high speeds.

*T&C Apply.

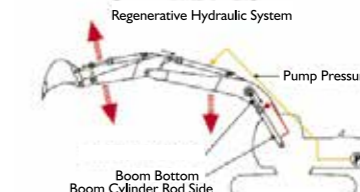


BEST-IN-CLASS PERFORMANCE

XCELLENT Digging



Excellent bucket and dipper tear out force result in high output and faster completion of work, especially in hard strata.



JCB's innovative hydraulic regeneration system recycles hydraulic oil across the cylinders for faster cycle times and reduced fuel consumption.

The advanced hydraulic system also ensures excellent multifunction performance resulting in higher output levels.

Tear out forces

Bucket
8614 kgf

Dipper
5792 kgf

2 TRAVEL SPEED

Travel speed: New JCB 130 is equipped with twin travel speeds for varying job needs.



LOW MAINTENANCE COST

Hydraulic oil
change interval
Every **5000**
hours

Special filtration system extends hydraulic life up to 5000 hrs with the hydraulic main return filter change intervals of 1000 hrs, which reduces maintenance costs.



Air pre-cleaner assembly filters dust particles and helps in increasing life of air filter elements and life of the engine.



The JCB engine provides higher maintenance interval of 500 hrs for engine oil, filter and fuel filter thereby reducing the maintenance costs.



High capacity fuel pre-filter with water separator - To increase life of fuel system components.



ULTIMATE EASE OF SERVICEABILITY

Compact and easy to handle bonnet is assisted by gas strut that helps in easy opening and closing. It makes periodic maintenance easy and effortless.

Easy to access periodic check points.

Side by side radiator & cooler for ease of maintenance.

Wire mesh provided to avoid clogging of radiator & oil cooler.

Cooler unit air-conditioner is hinged for the easy access to radiator & cooler unit for cleaning.

Fuses & relays are located inside cabin and are easy to access.



Boom end pivot bushes need to be greased at 50 hrs thereby reducing maintenance costs and increasing machine uptime.

A COMFORTABLE OPERATOR IS A PRODUCTIVE OPERATOR



Large cab with pressed steel construction offers increased internal space and overall visibility.

Cab is mounted on six viscous mounts to absorb vibrations.



Roof hatch provided to keep the cab well ventilated, which is aided by rear sliding window. Additional cab top lights for better illumination.



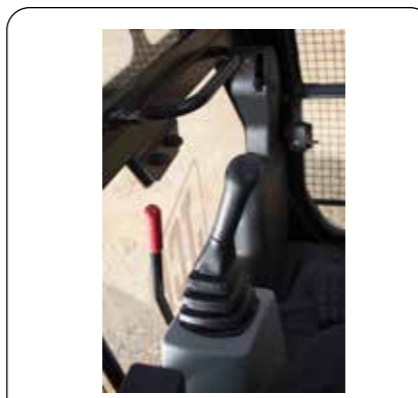
Glass in the cab front for high visibility, helps working at various heights.



Rubber coated track pedal and foot rests for operator comfort. Front lower glass can be removed for ventilation.



Cabin guard at front for protection against damage.



Low effort joystick for fatigue-free operations



AC option available.

Spacious cab with high head and leg room.

Operator seat with enhanced cushioning & increased reclining angle for comfort.

Ergonomically placed operator controls to minimise operator fatigue.



THE SAFEST CHOICE



Equipment protection system:
Audio-visual alerts provided in the instrument panel for the following :

Air filter blockage



Low coolant level



Water in fuel indicator



Damage protection:
Belly guard at lower frame & undercovers for upper frame.



High visibility:
Single right hand glass and low bonnet height for high visibility leads to safe operation.



Electrical safety:

Manual electric isolator & battery cover provided.



Machine safety:

Servo isolator lever over-ride system & swing lock system provide additional safety against unintended machine operation.



Stay Connected 24x7

Now be assured of your JCB Excavator's service, operation and security with the advanced telematics system called LiveLink.

SERVICE

LiveLink will notify you about the service requirement of your machine. It increases the efficiency of your machine and keeps it in perfect working conditions.

Service reminder

Reminds you when the service of your machine is due; the reminder helps you plan your work better.

Machine data backup

Helps to maintain the records of past services in an organised manner.

Critical machine health alerts

Lets you know the inside of your machine from a faraway location. Helps in taking proactive measures to avoid break down through alerts like

- Low engine oil pressure
- Low coolant temperature
- Blocked air filter
- Water in fuel

OPERATION

LiveLink helps you maintain your machine health and manage your fleet better by alerting you of any variation in health indicators. It lets you know in real time if your machine is facing a problem or needs any quick check-up.

Machine utilisation report

Maintains machine usage record and helps you analyse & optimise utilisation of machine.

Engine status

Informs you if your JCB machine's engine is switched on or off.

Idle time monitoring

Track and control engine idle time to reduce fuel consumption.



SECURITY

LiveLink helps you to keep a track of your machine's location, protection and movement.

GPS tracking

Tells you the exact position of your machine on a map.

Operating hours

Alerts you when the machine is used outside the working hours as set by you.

Possible intrusion/Tow away alerts

Helps you save your machine from intruders and possible tow aways.

Geofencing

Lets you keep your machine within the allocated area of work.



EXTENDED CARE

GIVE YOUR MACHINE EXTENDED WARRANTY AND CARE.

- JCB Careplus is an extended warranty programme that comes into effect after the machine standard warranty expires.
- JCB Careplus can be purchased within the 1st year from the sale of the machine.
- The programme offers you peace of mind and saves your maintenance cost even after your machine standard warranty expires.

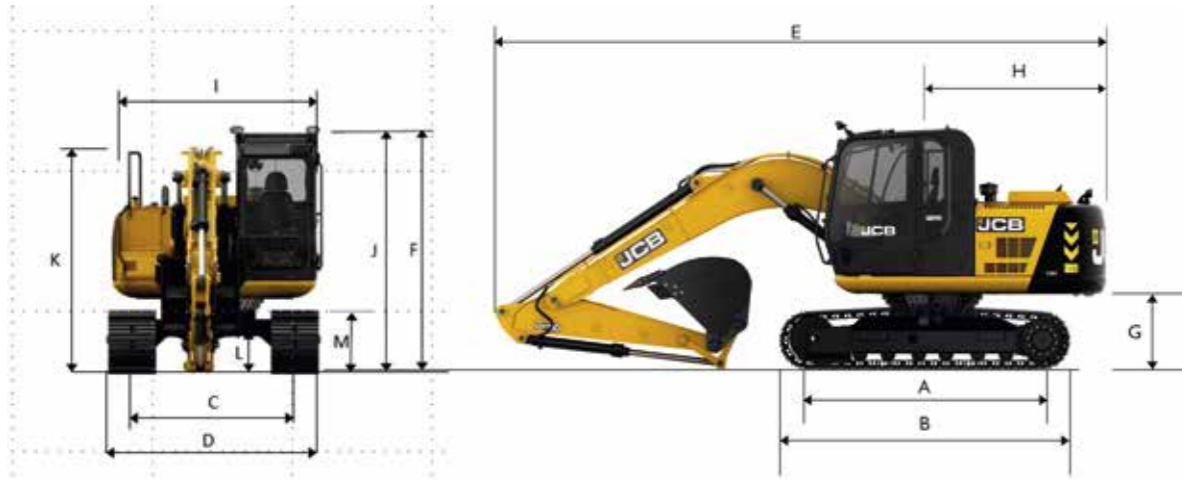


BENEFITS OF JCB CAREPLUS

 No limits on number of claims	 Preventive maintenance service*	 Nationwide coverage*
 JCB skilled manpower support	 Maximum productivity	 Maximum uptime
 Maximum performance	 Breakdown cost protection	 Better resale value

*T&C Apply





WEIGHTS & GROUND BEARING PRESSURE	
Max. operating weight (kg)	12,800
Track shoe (mm)	500
Ground bearing pressure (kg/sq. cm)	0.45

STATIC DIMENSIONS	
	m (ft-in)
A Track length on ground	2.58 (8-6)
B Undercarriage overall length	3.32 (10-11)
C Track gauge	1.99 (6-6)
D Width over tracks (500 mm track shoes)	2.49 (8-2)
	1.95 (6ft 5in)
E Transport length with monoboom	7.27 (23-10)
F Transport height with monoboom	2.86 (9-5)
G Counterweight clearance	905 mm (3-0)
H Tail swing radius	2.05(6-9)
I Width of super structure	2.41 (7-11)
J Height over cab	2.84 (9-4)
K Height over grab rail	2.86 (9-5)
L Ground clearance	464 mm (1-6)
M Track height	767 mm (2-6)

* Machine in transport position

ENGINE	
Model	JCB 444 NA
Type	Water cooled, 4 stroke, 4-cylinder, direct injection
Gross power	80hp@2000rpm (SAEJ1995)
Piston displacement	4.4 L
Air filtration	Dry element with secondary safety element
Cooling	Water cooled via large capacity radiator with anti block 'wavy' fins.
Starting system	12 volt.
Battery	1 x 12 volt, 135AH
Alternator	12 volt, 95 amp

SERVICE CAPACITIES	
Fuel tank	253 L
Engine coolant	15 L
Engine oil	14 L
Swing reduction gear	2.2 L
Track reduction gear (each side)	3.0 L
Hydraulic system	124.0 L
Hydraulic tank	73.0 L

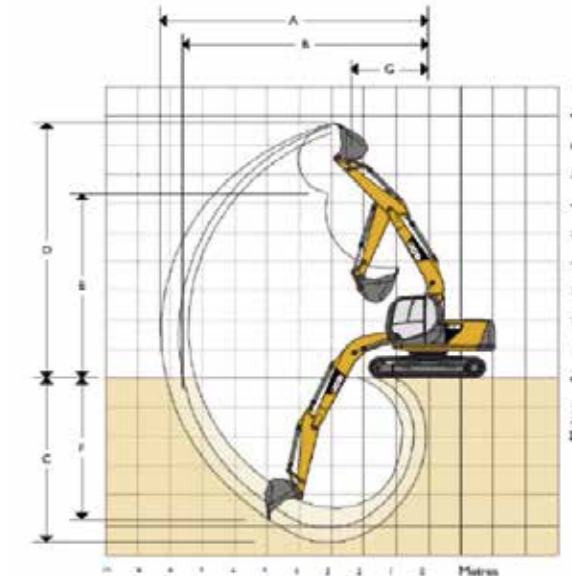
CAB + CAB GUARD

Pressed steel construction with high strength rolled sections. Excellent all round visibility during digging, loading & positioning. Removable front lower glass and sliding rear window. Excellent ergonomic positioning of operating levers for reduced operator fatigue. Optional ducted AC unit for operator comfort. Mobile phone charging point & lockable stowage available. Rubber covered track pedal, water bottle & document holders provided. Optional cab guards for cab front & top available for protection against flying objects. Additional cab top lights for illumination. Cab guards available for protection against flying objects - front (standard) and top (optional).

EXCAVATOR BUCKET	
All buckets are JCB type fully welded steel, with sealed, hardened steel pivot pins and replaceable wear parts.	
Bucket	Toe plate width
0.5 m ³ (HD)	890 mm
0.65 m ³ (GP)	1.04 m

TRAVEL SPEED & TRACTIVE EFFORT	
Travel speed (High)	4.6 kmph
Travel speed (Low)	3.4 kmph
Tractive effort	9630 kgf

WORKING RANGE: JCB 130		
Boom length:	m (ft-in)	4.40 (14-5)
Dipper length:	m (ft-in)	1.95 (6-5)
A Maximum digging reach	m (ft-in)	7.61 (24-12)
B Maximum digging reach (on ground)	m (ft-in)	7.45 (24-5)
C Maximum digging depth	m (ft-in)	4.83 (15-10)
D Maximum digging height	m (ft-in)	8.58 (28-2)
E Maximum dumping height	m (ft-in)	6.12 (20-1)
F Maximum vertical wall cut depth	m (ft-in)	4.28 (14-0)
G Minimum swing radius	m (ft-in)	2.14 (7-0)
Bucket rotation	deg.	182°
Max. dipper tearout (ISO 6015)	kgf	5792
Max. bucket tearout (ISO 6015)	kgf	8614



LIFT CAPACITIES - Dipper length: 1.95 m 4.40 m (14 ft 5 in) Monoboom, Trackshoes: 500 mm (20 in), No bucket. JCB 130											
Reach	1.5m (4 ft 11 in)		3 m (9 ft 10 in)		4.5 m (14 ft 9 in)		6 m (19 ft 8 in)		Capacity at Max Reach		
Load point Ht.	kg	kg	kg	kg	kg	kg	kg	kg	kg	m	
7.5 m (24.7 ft)											
6.0 m (19.8 ft)									2350*	2350*	4.44
4.5 m (14.9 ft)			3300*	3300*	3020*	2810			2070*	1910	5.59
3.0 m (9.10 ft)			4950*	4940	3540*	2640	2590	1650	2020*	1570	6.17
1.5 m (4.11 ft)					3920	2430	2510	1580	2110*	1440	6.35
0m			6080*	4120	3760	2290	2450	1530	2360	1470	6.17
-15 m (-4.11 ft)	4800*	4800*	6800*	4130	3730	2260			2730	1700	5.58
-3.0 m (-9.10 ft)			5470*	4290					3470*	2440	4.42
-4.5 m (-14.9 ft)											

Lift capacity front and rear.

Lift capacity full circle.

- Notes:
- For lifting capacity including bucket, subtract total weight of bucket and quickhitch from the above values.
 - Lifting capacities are based on ISO 10567, that is: 75% of minimum tipping load or 87% of hydraulic lift capacity, whichever is less. Lifting capacities marked* are based on hydraulic capacity.
 - Lift capacities assume that the machine is on firm, level ground.
 - Lift capacities may be limited by local regulations. Please refer to your dealer.

SWING SYSTEM

Swing motor	: Axial piston type.
Swing brake	: Hydraulic braking, electrically operated spring applied disc type parking brake.
Final drive	: Planetary reduction.
Swing gear	: Large diameter, internally toothed fully sealed grease bath lubricated.
Swing speed	: 12 rpm

HYDRAULIC SYSTEM

A variable flow with flow on demand, variable power output and servo operated, multi-function open centre control.

2 Work modes : Productivity & Economy

Pumps

Main pumps	: 2 no's variable displacement axial piston type.
Maximum flow	: 2 x 117 l/min
Servo pump	: Gear type.
Maximum flow	: 20 L/min

Control valve

A combined four and five spool control valve with auxiliary service spool as standard. When required twin pump flow is combined to boom, dipper and bucket services for greater speed and efficiency.

Relief valve settings	
Boom / Arm / Bucket	320 bar
Swing circuit	279 bar
Travel circuit	320 bar
Pilot control	40 bar

CONTROLS

Excavator : All servo lever operated to ISO control pattern.
 Engine Auto-Idler : Reduces engine speed to low idle depending upon machine utilisation thus saving fuel.
 Tracks : Individually servo operated by foot pedal or hand lever.
 Auxiliary : Operated via servo foot pedal.
 Horn : Operated via servo lever mounted button.

UNDERCARRIAGE

Construction:	Standard undercarriage. Fully welded "X" frame type with central belly guarding and sloping side members with dirt relief holes under top rollers.
Track shoe	: 500mm (Standard)
Upper & lower rollers	: Heat treated, sealed and lubricated.
Track adjustment	: Grease cylinder type.
Track idler	: Sealed and lubricated, with spring-enhanced recoil.
Track type	: Sealed and lubricated.
No. of lower rollers	: 6 Per side
No. of upper rollers	: 1 per side
No. of track shoes	: 42 per side

STANDARD EQUIPMENT

FM Radio and USB music player with speakers.
 Auto-Idler.
 Work lights: 2 nos on Cabin, 1 on the Boom-LH and 1 on the tool box.
 Engine fan guard.
 Undercarriage belly guarding.
 Upper structure under covers.
 Engine pre-cleaner.
 Double element radial type air cleaner.
 Cabin fan.
 Suspension seat.
 Cab floor mat.
 Rubber covered track pedals.
 Removable front lower cab glass.
 Hammer pipe mounting brackets.
 Tool kit.
 Handrail and nonslip walk ways.
 Radiator fly screen.
 General purpose buckets (0.65 cu.m.).
 Side cutters on GP bucket.
 Cabin guard (Front)
 Livelink.

OPTIONAL EQUIPMENT

Fully ducted air conditioner unit.
 Cabin guard (Top).
 Rock breaker (HM 980).
 Rock breaker pipe work.
 Heavy-Duty buckets (0.5 cu.m.).
 First aid kit.
 Fire extinguisher.
 Work light: 1 on the counterweight
 Additional lights: 2 nos. on cab & 1 no. on counterweight.

TRACK DRIVE

Type	: Fully hydrostatic.
Travel motors	: Axial piston type, fully guarded within undercarriage frame.
Final Drive	: Planetary reduction, bolt-on sprockets.
Service brake	: Hydraulic counter balance valve to prevent over speeding on gradients.
Park brake	: Disc type, spring applied, automatic hydraulic release.
Gradeability	: 70% (35 deg.) continuous
Travel Speed	: 4.6 Kmph (High), 3.4 Kmph(Low)
Tractive efforts	: 9630 kgf

EXCAVATOR END

Deep section design of boom & arm with reinforced pivot bosses provided. Arm protection plate as standard. Breaker pipe mounting provision available.

FILTRATION SYSTEM

In tank	: 150 micron, suction strainer.
Main return line	: 10 micron, fibre form element.
Pilot line	: 10 micron, paper element.
Drain filter	: 10 micron, paper element
Hammer return	: 10 micron, reinforced microform element

