

NEW 455.4 | WHEEL LOADER

**BHARAT
KA JCB**



Powered by
CEV IV
STAGE
ENGINE

THE POWER OF SUCCESS.

Engine power: 168 kW (225 hp) | Operating weight: 18,000 kgs | Full turn tipping load: 11,100 kgs
Standard shovel capacity: 3.3m³





50 YEARS OF JCB WHEEL LOADERS.

Over the five decades, company's award-winning loader range has expanded beyond recognition, introducing many market-leading technologies and establishing JCB as a global leader in the loader business.



GIVING SHAPE TO SUCCESS

Intelligent, tough and prudent beasts are ready to take on tougher challenges head-on whilst giving you sheer comfort. JCB's new range of Wheel Loaders; not only boast of engineering brilliance and technological advancement but also of robust components. They are designed and positioned to contribute to productivity, efficiency and savings. So, get ready and witness your success shaping-up as our range of wheel loaders glide their way into your business.




THE POWER OF SUCCESS.


Introducing the new CEV Stage IV 455-4 Wheel loader.

JCB brings to you a machine that has the power to give you greater success in your business. The new JCB 455-4 wheel loader is engineered to outperform your expectation, it has the power to give you more productivity, proven fuel efficiency and intelligence that is more advanced. With this machine you can make your presence dominant by conquering even the most difficult terrain, the sheer engineering brilliance, versatility and strength makes it a machine you can depend on. Now, you've the power, make it count!


resilient...

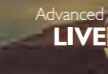



 **Power to give**
10%* Better fuel efficiency

 **Power to give**
5%* More productivity

 **Powered with**
Proven & reliable aggregates

 **Powered with**
More spacious and comfortable cabin

 **Powered with**
Advanced telematics technology

 **Power that gives you**
Total peace of mind
700+ Outlets
4,000+ Skilled engineers

*Against the previous BS-III 455ZX, tested under controlled environment. T&C Apply.

POWER OF BEST-IN-CLASS FEATURES

High Performance

- High torque 1186Nm @1300rpm
- Powerful 168kW Cummins QSB6.7 engine
- Z bar-linkage with high breakout force

Better Productivity

- High output
- Bigger and wider bucket range with varied capacity

Dynamic Fuel Efficiency

- 10%* More fuel efficiency
- Load sensing hydraulic system
- CRDI fuel system
- Auto transmission minimises transmission losses

Reliability & Durability

- Proven CEV Stage IV Cummins QSB6.7 engine
- ZF Axles with ZF Ergo powershift auto transmission

Low Maintenance Cost

- IntelliDiagnostic for quick and easy troubleshooting
- Extended oil change intervals

Better Comfort & Safety

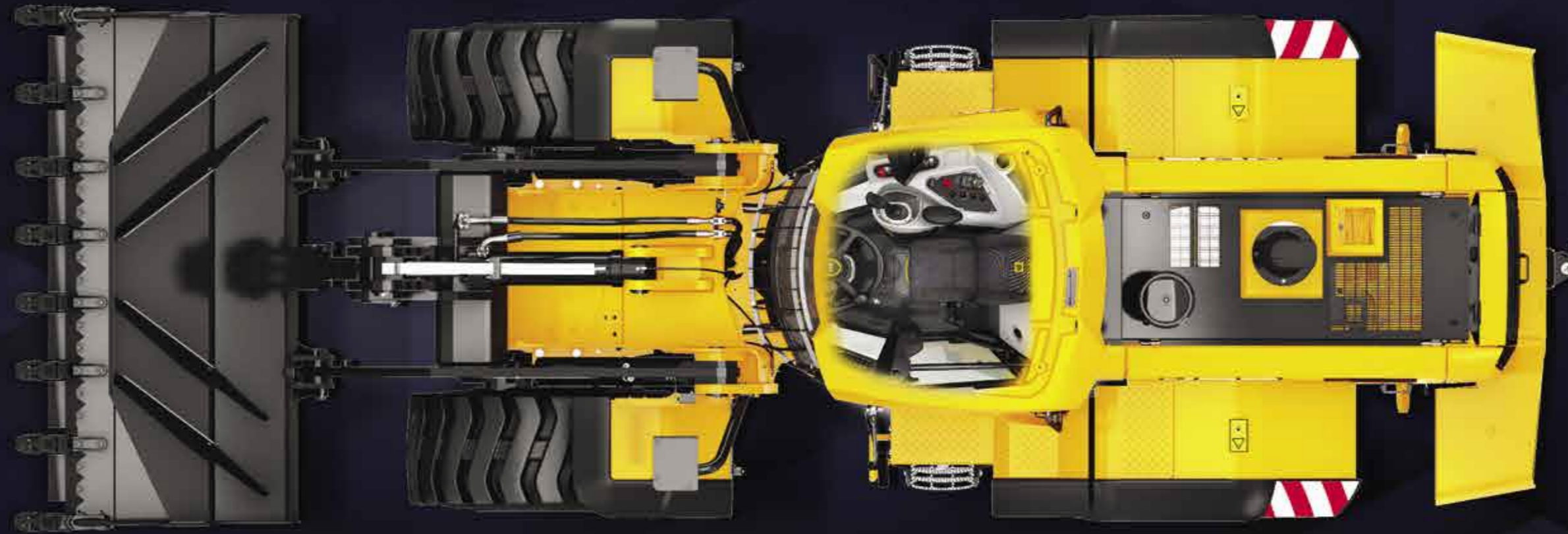
- Bigger cabin
- Excellent all-round visibility
- FOPS & ROPS (optional) for enhanced safety
- Unique engine safety system

Ease of Use

- 7" Informative LCD display for alerts
- Battery cut-off switch

24x7 Connectivity

- New advanced telematics - JCB LiveLink 4.0 with fuel consumption reports & alerts



INTELLI
LOAD

MADE IN INDIA, MADE FOR SUCCESS.

Introducing the



Efficient | Reliable



CRDi

VARIABLE GEOMETRY
TURBO CHARGER

ROBUST FUEL
FILTRATION
SYSTEM

WATERPROOF
IP69
CONNECTORS

POWER OF SUPERIOR ENGINEERING

- 1 Cummins Quantum series engine.
- 2 Fuel efficient and reliable Cummins QSB6.7 engine. The combination of CRDI technology with DOC, DPF after treatment system achieves the CEV Stage IV norms value efficiently.
- 3 Cleaner combustion with CRDI technology.
- 4 Higher performance due to high torque at low speed, Variable Geometry Turbocharger (VGT) with EGR.
- 5 Cleaner combustion with DOC, DPF and SCR give durable emission.
- 6 Robust fuel filtration system and waterproof IP69 connectors make the engine durable and reliable.



POWER OF GREATER EFFICIENCY

JCB 455-4 IS ENGINEERED TO MOVE MATERIAL IN LESSER TIME. THE PRECISION IN ENGINEERING IS MANIFESTED BY THE FUNCTIONING AND PLACEMENT OF ENGINE, AXLES, DRIVELINE AND HYDRAULICS.

1 Better fuel efficiency with new CEV Stage IV Cummins QSB series engine with 6.7 liter capacity and CRDi technology.

2 More savings, up to ₹20 lakhs* in 5 years.

3 The variable pump is programmed to control the flow depending on the load this minimises the hydraulic loss.

10%^{*} MORE FUEL EFFICIENT

SAVE FUEL WORTH ₹20,00,000* IN 5 YEARS

1 CRDi



*Against the previous BS-III 455ZX, tested under controlled environment. T&C Apply.



JCB 455.4 WHEEL LOADER



POWER OF DEPENDABLE RELIABILITY & DURABILITY

THIS MACHINE IS ENGINEERED TO HANDLE EVEN THE MOST DEMANDING WORK SITES HOUR AFTER HOUR, DAY AFTER DAY.

- 1 More productivity and unbeatable performance with highly reliable Cummins engine.
- 2 Get more uptime in every condition with reliable, durable and efficient hydraulic pump, control valve, steering valve.
- 3 Safer, durable and low maintenance with hydraulically powered, outboard mounted, oil-immersed multiple disc brakes.
- 4 Sturdy machine built with finite element analysis and rigorous testing ensuring longer life of structures.
- 5 Easy manoeuvrability, productivity and reliability with heavy-duty ZF axles with LSD & wet disc brake.
- 6 The articulation joint has a heavy-duty box section, centre pin with twin taper roller bearings so that it can tolerate both vertical and horizontal loadings.
- 7 Longer life, safety and protection of electrical harness and thus, low maintenance cost with dust & water proof IP69 certified connectors.
- 8 ZF Auto transmission offers durability, longer maintenance interval and high output with Kick down feature.

1 Cummins Engine



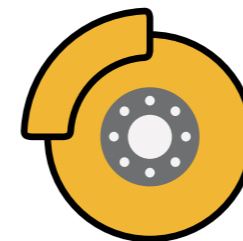
2 Control Valve



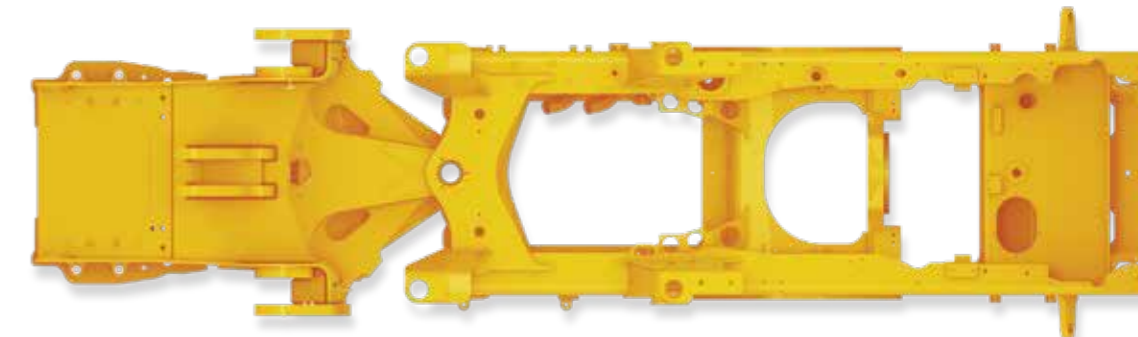
2 Hydraulic Pump



3 Multiple Disc Brakes



4 Heavy-Duty Chassis



5 Heavy-Duty ZF Axles



Reliable



Transmission and ZF Axles



POWER OF SUPERIOR PERFORMANCE & PRODUCTIVITY

ENSURING UNMATCHED AND UNINTERRUPTED PRODUCTIVITY WITH HIGH POWER AND TORQUE, THE HYDRAULICS AND LOADER END IS SET-UP TO KEEP THE CYCLE TIME SHORT AND WORKING SHIFTS LONG.

1 Higher output and quick engine response to more load with high-pressure fuel injection system, the high swirl design and 4 valves per cylinder offers high peak torque -1,186Nm @ 1,300 rpm.

2 More output and efficiency even in tough underfoot conditions with Auto Kick down function, it shifts the gear to 1st speed for excellent bucket penetration.

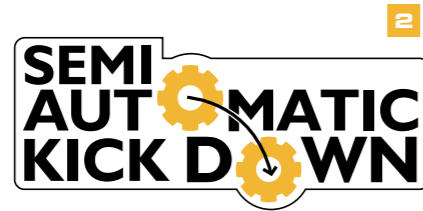
3 Higher productivity, tractive effort and reduced cycle time with the new design of the loader arm, the dump height has been increased by 5%* in power mode. It enables the machine to dump easily on high body trucks.

4 Higher output and versatility in job with the wide bucket range-from 2.5 cu.m to 5.0 cu.m.

5 Higher breakout force with Ergo Powershift (ZF4WG190) auto transmission with 4 forward & 3 reverse with max. forward speed 36 Kmph and max. reverse speed 35 Kmph. It improves operator efficiency and productivity.

6 Better bucket penetration with Z bar linkage. This also improves operator efficiency and thereby, productivity.

7 Stronger grip and more stability with standard 23.5x25 tyres.



*Against the previous BS-III 455ZX, tested under controlled environment. T&C Apply.



POWER OF SAVINGS ON MAINTENANCE

SUCCESS IS NOW ACHIEVED AT LOWER COST AS THE NEW JCB 455-4 WORKS FOR MORE HOURS AS IT COMES WITH WORLD-CLASS QUALITY COMPONENTS THAT ARE RELIABLE AND GIVE VALUE FOR MONEY.

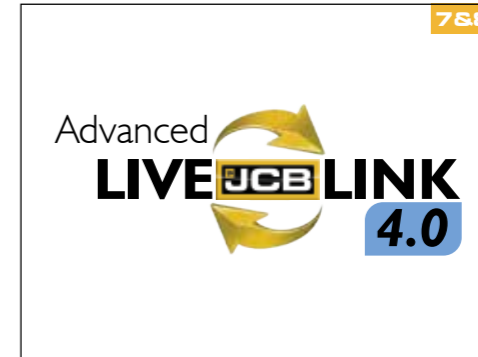
- 1 Easy access, reduced maintenance time and thus, more productivity with ground level engine bay for daily checkpoints.
- 2 More savings with extended change periods for engine oil/filter (500 hours), fuel filter (500 hours) and transmission oil (2,000 hours).
- 3 More reliability and uptime with inbuilt quick release type pressure testing ports, they offer easy diagnostics.
- 4 The Electric Feed Pump offers long life and easy priming of fuel system for higher uptime.



SERVICE INTERVALS	
Engine oil & oil filter	Every 500 hours
Fuel filters	Every 500 hours
Transmission oil	Every 2,000 hours



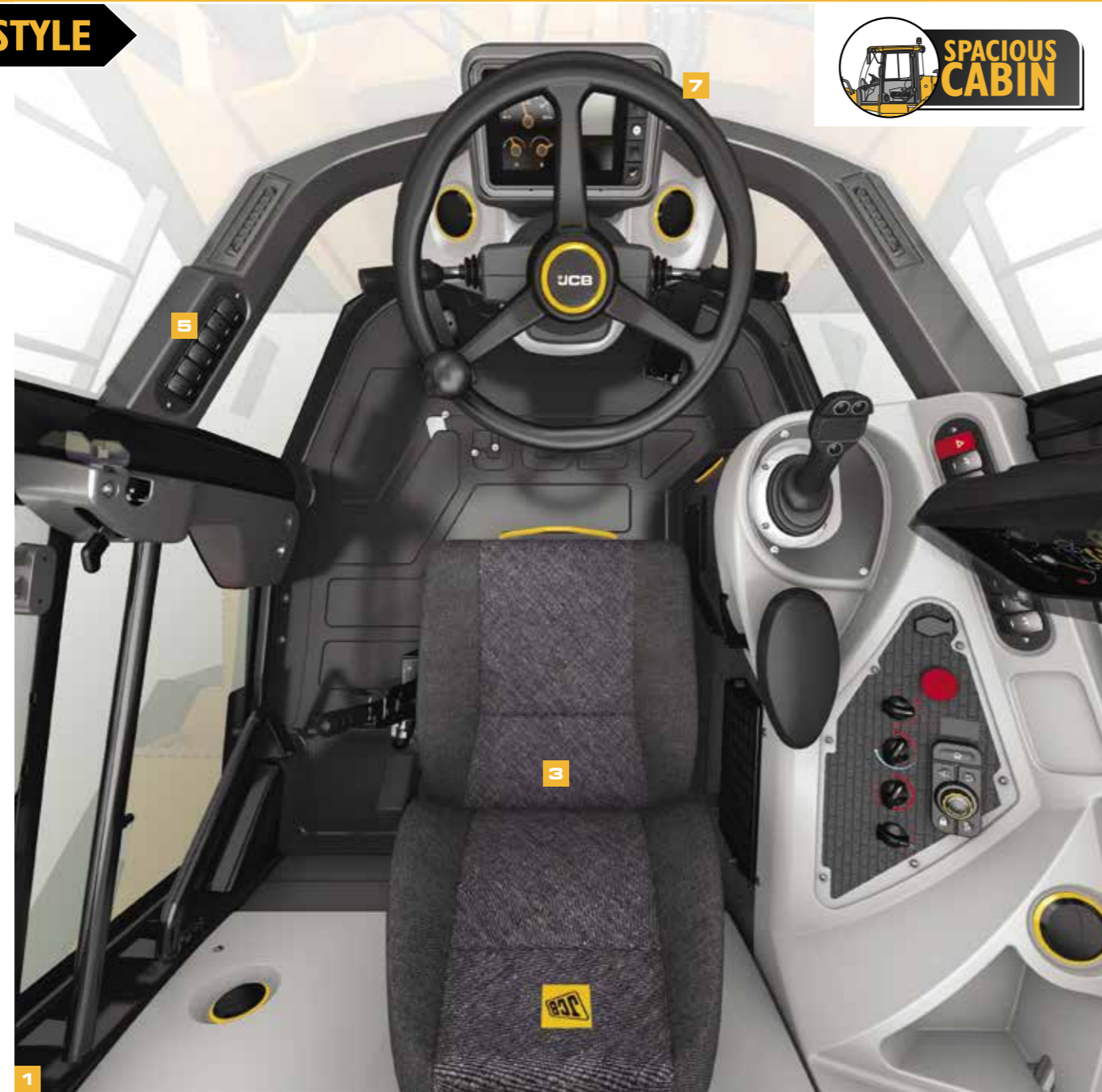
- 5 The wide opening gull-wing doors give easy access to the engine bay and cooling packs for servicing and daily check-ups.
- 6 The informative visual digital cluster provides easy to understand alerts with ERROR code & description for easy troubleshooting, thus, helps in higher uptime.
- 7 LiveLink alerts like service due reminder, low engine oil pressure, water in fuel, low fuel level etc., not only keep you informed but also help you in taking quick and on-time measures.
- 8 Centralised Lubrication System (CLS) is optional, it enhances machine uptime and life of pins & bushes.



POWER OF SUPREME COMFORT & STYLE

JCB HAS ALWAYS BELIEVED THAT PRODUCTIVITY INCREASES WITH COMFORTABLE OPERATORS. THEREFORE, THIS MACHINE COMES WITH STYLISH AND ERGONOMICALLY DESIGNED 3M3 CABIN, ENSURING SAFETY AND COMFORT OF THE OPERATORS.

- 1 Ease in operation and more legroom as the cabin is spacious with ergonomically positioned machine controls.
- 2 Low noise and vibration in the cabin, keep operator's fatigue at bay as the cabin is isolated from the chassis with wide rubber mounts.
- 3 Better operator performance with a comfortable seat designed for longer working hours.
- 4 Easy and relevant daily information from the stylish, modern central digital display units that provide machines health details, service requirements and operating information.
- 5 The new cabin has a windscreen and FM radio.
- 6 Keep the cabin cooler with air conditioning which comes as an option.
- 7 The adjustable steering column offers better control, maximum comfort and customised position to the operator.
- 8 Precise and more controlled operations with servo control, an effortless single-hand machine control joystick (optional) which controls loader arm & bucket operations, forward & reverse horn and transmission disconnect.
- 9 Better ventilation and easy on-site communication with the sliding window on each side.
- 10 The increased cab glass area gives better visibility.
- 11 For better visibility and safety even at night with the work

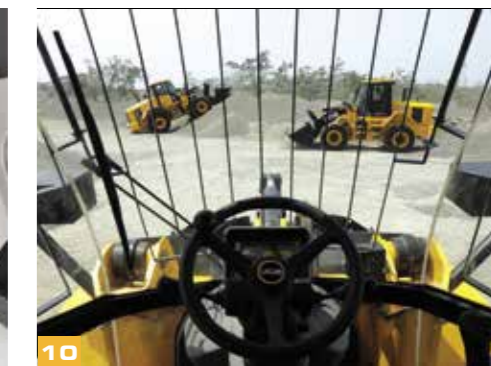
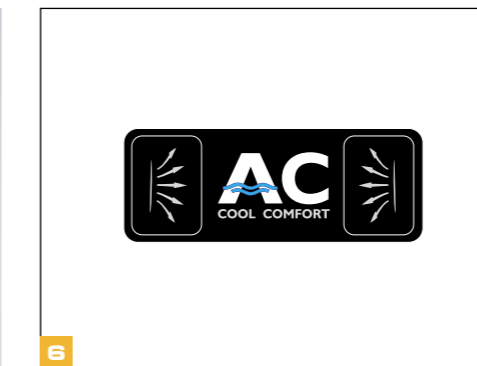


lamps, there are 2nos. of head lamps, 2 nos. each of front and rear lamps, parking lights, direction indicator lamps, reverse light and fog lamps.

12 Get clear and detailed information with the new and stylish 7" digital display.

13 Machine that has its style on-point, new decals, roof, pipe covers and square work lamps make the machine aesthetic.

14 New & improved cabin with dual tone gives the cabin a classy look.



POWER OF SUPERIOR SAFETY

SAFETY AND SECURITY OF THE OPERATOR & MACHINE ARE OUR TOP PRIORITIES. THIS HAS BEEN ENSURED BY BELOW MENTIONED FEATURES.

1 Efficient and safer brakes as there is a separate circuit for front and rear hydraulic power brakes with backup.

2 Access machine safely with 3 point contact cab access which are correctly placed complemented by well-positioned grab handles.

3 The accumulator lowers the loader arm during emergency conditions.

4 More safety of the machine and the operator with the rearview camera (optional) that displays an unobstructed rearview.

5 LiveLink's mobile alerts on fuel theft, towaway, intrusion, geo fencing and battery removal ensure safety of the machine even when you are away.

6 Easy manoeuvring and safety of the operator during emergency with the separate steering and brake priority hydraulic circuit.



7 Avert a mishap with emergency steering (optional), it helps the operator to steer the machine to a safer location.

8 Safer operations with FOPS & ROPS compliant cabin (optional).



POWER OF LIVELINK

INTRODUCING THE NEXT GENER

ADVANCED TELEMATICS TECHNOLOGY- LIVELINK



LiveLink is an advanced telematics technology which helps you monitor and manage your machine fleet remotely from anywhere in the world via web or your smartphone.

Power of LiveLink: With LiveLink you can reduce fuel cost, optimise machine, operator performance, proactively manage service and maintenance to maximise uptime. Stay connected to your machines via remote monitoring, experience new levels of control and efficiency with LiveLink.



SERVICE



Service reminder: Reminds you when the service of your machine is due; the reminder helps you plan your work better.



Machine data backup: Helps to maintain the records of past services in an organised manner.



Critical machine health alerts: Lets you know the inside of your machine from a faraway location. Helps in taking proactive measures to avoid breakdown through alerts.

OPERATION



Fuel level information: View fuel usage of your machine, which helps in analysing your machine's fuel consumption, thus, helping you improve efficiency and save on fuel. It also reports any sudden fuel level decrease.



Machine utilisation reports: Maintains machine usage record and helps you analyse & optimise utilisation of the machine.



Engine status: Informs you if your JCB machine's engine is switched ON or OFF.

SECURITY



GPS tracking: Tells you the exact location of your machine on a map.



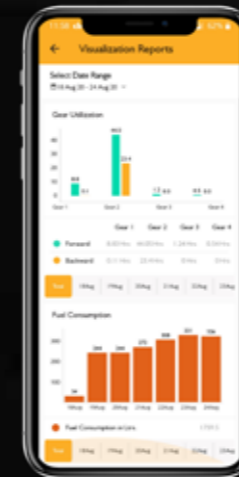
Towaway alerts: Help you save your machine from intruders and possible towaways.



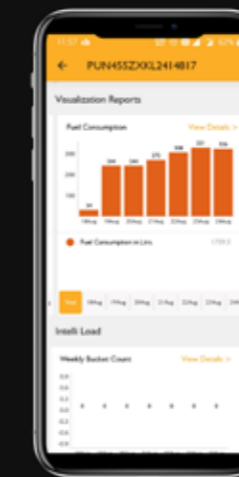
Operating hours: Lets you control the machine operation in permitted time frame.



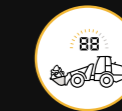
Geofencing: Lets you keep your machine within the allocated area of work.



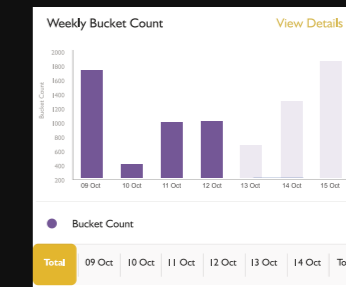
Gear utilisation
Analyse operator behaviour with reports on time spent in each gear.



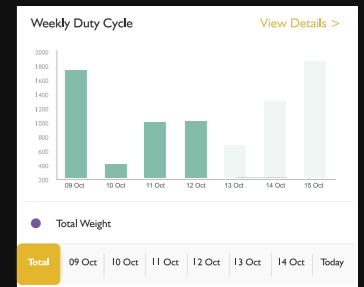
Fuel consumption
Know how much fuel is consumed per day to optimise fuel usage according to work for better fuel-efficiency.



Bucket Load Count



Duty Cycle



POWERFUL & INTELLIGENT

Intelli Load, an intelligent and unique productivity management system to achieve better machine performance. It increases efficiency by eliminating the guess work and takes the productivity to a whole new level. A real time onboard display informs the exact weight and volume of material while loading.

- Integrated with LiveLink
- Overloading and underloading alerts
- Precise payload measuring
- Saves time and fuel



I N T E L L I
L O A D

POWER OF PROMPT SERVICE

4000+ CEV STAGE IV
SERVICE ENGINEERS



EXTENSIVE CUSTOMER SUPPORT NETWORK

With 700+ outlets, JCB has widely spread and prompt support system in the construction industry.

One Shop Solution-JCB manufactures all major parts of its machine which are readily available at its dealerships & outlets ensuring rapid customer service support.

4000+ service engineers are trained & certified for CEV Stage IV machines, thereby, quickly resolving any customer concern.

60+
Dealers

700+
Outlets

3000+
Mobile service
engineers

18 Operator
training centres

5
Parts warehouses

24x7
Support
12 Languages

250+
Service
vans

POWER OF SERVICE & SUPPORT

JCB'S CERTIFIED ENGINEERS FOR WHEEL LOADER

JCB's certified engineers are there to maximise your profitability and reduce downtime. Our engineers are always there to serve the customers and provide value-added solutions to all their concerns regarding the machines and services.



JCB trained and certified engineers



Best-in-class service and repairs



On-site training and support



POWER OF CARE

GIVE YOUR MACHINE EXTENDED WARRANTY AND CARE.

- JCB Careplus is an extended warranty programme that comes into effect after the machine's standard warranty expires.
- JCB Careplus can be purchased within the 1st year from the sale of the machine.
- The programme offers you peace of mind and saves your maintenance cost even after your machine's standard warranty expires.



Extended Warranty Programme



BENEFITS OF JCB CAREPLUS



No limits on number of claims



Preventive maintenance service*



Nationwide coverage*



JCB skilled manpower support



Maximum productivity



Maximum uptime



Maximum performance



Breakdown cost protection



Better resale value

*T&C Apply

JCB LOYALTY PROGRAMME



We believe that customer loyalty is paramount to any brand's success. Our loyalty programme is a reflection of our brand promise and our constant endeavour to offer you more than your expectations.

Instant membership card | Welcome kit
Reward points | Extended benefits
Special programme features

Blue Card



On purchase of a new machine or parts worth ₹1,000

Silver Card



Blue members making a purchase of ₹25,000 in the quarter

Gold Card

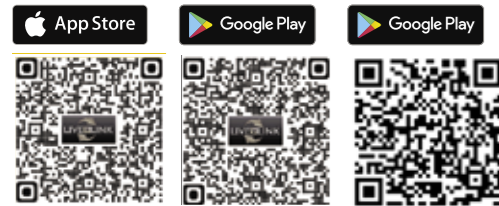


Silver members making a purchase of ₹50,000 in the quarter

SMART & DIGITAL SUPPORT



Download from:



LiveLink

Genuine Parts

Scan the QR Code to connect to JCB Support Facebook Page



EXTENSIVE PARTS SUPPORT



Our wide range of JCB attachments complete your machine's performance with maximum efficiency and productivity and thus, reduce downtime and increase more savings.

- Value for money
- Perform in synergy with multiple products
- Maximise your machine's performance
- Demonstrate exemplary durability & reliability



JCB genuine parts offer a comprehensive machine protection solution. Designed to work in conjunction with JCB fluids in the JCB engines in synergy with other component systems, ensuring:

- Optimum flow and system efficiency
- Maximised engine performance
- Reduced running costs
- Compliance with emission norms
- Protection from system contamination



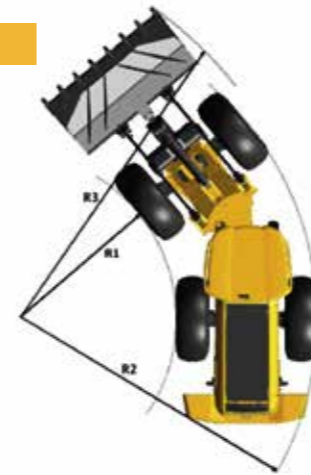
Being compatible with JCB machines, the range of JCB lubricants assure a 100% better life for all your JCB genuine parts.

- JCB lubricants meet JCB specifications
- JCB lubricants are specially formulated as per JCB specifications
- High-quality base oils blended with very high-quality additive packages
- Peak performance in hazardous condition due to the following reasons:
 - Maintains viscosity at higher temperature and pressure
 - Load carrying capacity
 - Oxidation stability
 - Dispersant
- Complete equipment protection



TURNING RADIUS

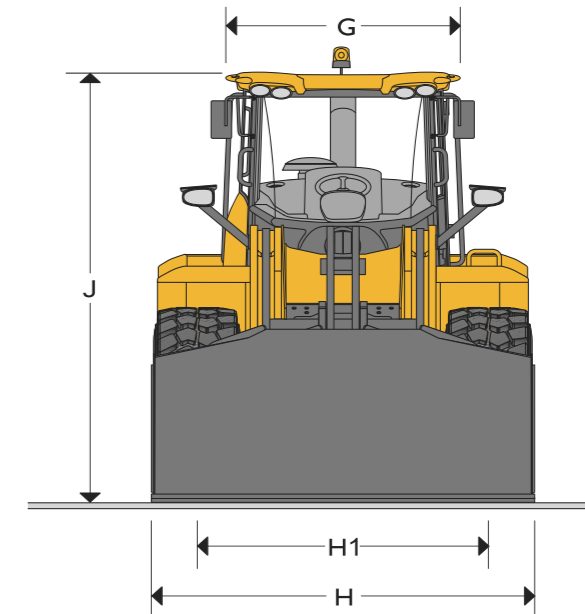
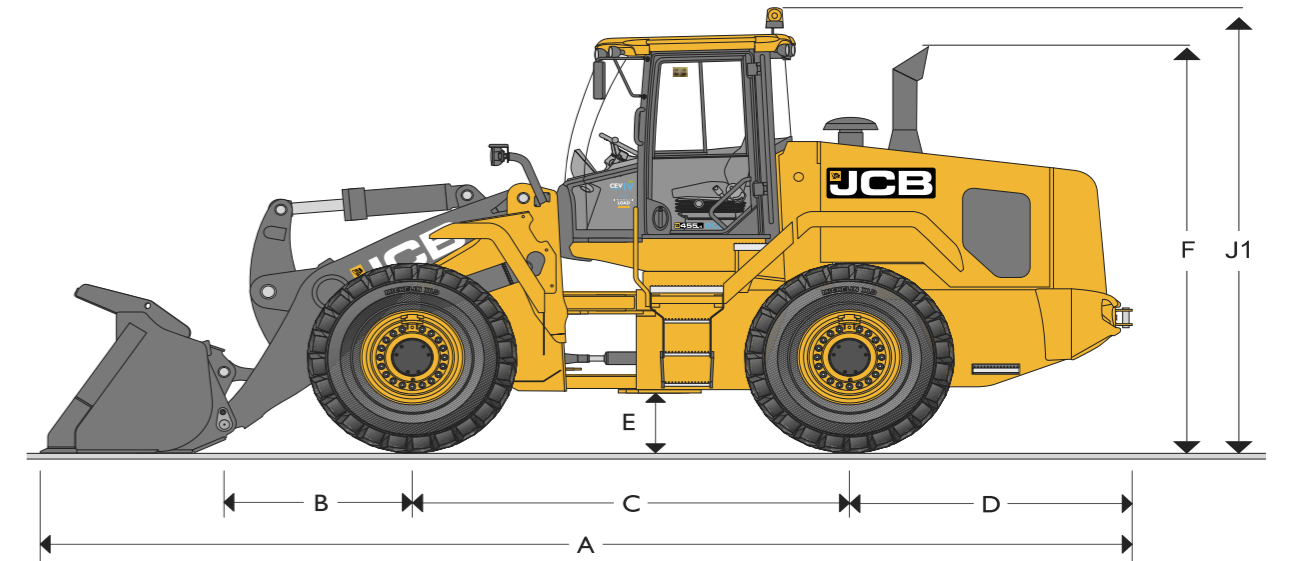
- R1 Inside turn radius
- R2 Radius over tyre
- R3 Turn radius over shovel
- R3 (M) Maximum turn radius over shovel

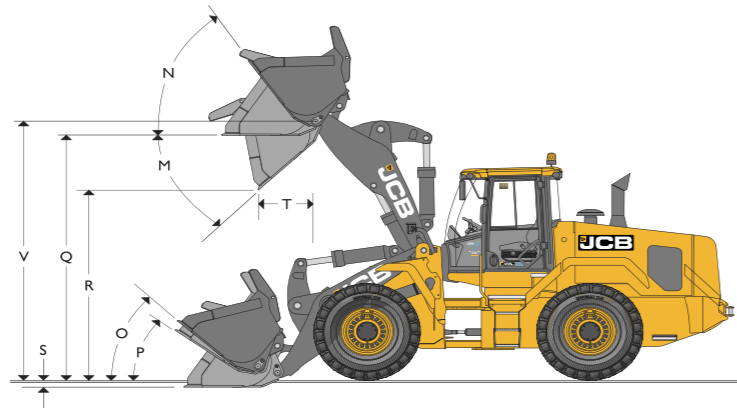


STATIC DIMENSIONS ENGINE

A	Overall length	m	8.46
B	Axle to pivot pin	m	1.36
C	Wheel base	m	3.30
D	Axle to counterweight (Tow hitch)	m	2.16
E	Minimum ground clearance	m	0.48
F	Height over exhaust	m	3.22
G	Width over cab	m	1.53
H	Width over tyres	m	2.72
H1	Wheel track	m	2.10
J	Height Over Cab	m	3.40
J1	Overall Height with Beacon	m	3.78
	Front axle weight	kg	8204
	Rear axle weight	kg	9596
	Total weight	kg	18000
	Inside Turn Radius	m	3.18
	Maximum Turn Radius over Shovel	m	6.64
	Articulation Angle	deg	±40°

Data based on machine equipped with direct mounted 3.1 m³ bucket with toe plates and bolt on teeth & 23.5- 25 -20 PR L3 CEAT





LOADER DIMENSIONS		General purpose		General purpose		General purpose		Coal bucket		General purpose		General purpose		General purpose					
Shovel mounting		Direct	Direct	Direct	Direct	Direct	Direct	Direct	Direct	Direct	Direct	Quickhitch	Quickhitch	Quickhitch	Quickhitch				
Shovel type		General purpose			General purpose			General purpose			Coal bucket		General purpose		General purpose				
Shovel equipment		Tipped teeth penetration			"Reversible toeplate no teeth"			Tipped teeth & toe plate segments			No teeth	"Reversible toeplate no teeth"	Tipped teeth		Tipped teeth		Tipped teeth & toeplate segments		
Shovel capacity (SAE heaped)	m ³	2.8	3.1	3.3	2.8	3.3	3.5	2.5	2.8	3.3	3.5	4.5	5.0	3.1	3.3	3.3	3.5	3.1	3.5
Shovel capacity (struck)	m ³	2.50	2.79	2.99	2.497	2.99	3.14	2.09	2.497	2.99	3.14	3.75	4.11	2.497	2.687	2.648	2.884	2.63	2.884
Shovel width	m	2.80	2.80	2.80	2.80	2.80	2.80	2.80	2.80	2.80	2.80	3.23	3.23	2.80	2.80	2.80	2.80	2.80	2.80
Shovel weight	kg	1538	1613	1663	1643	1708	1757	1607	1689	1754	1803	1723	2100	1380	1416	1495	1531	2066	1531
Maximum material density	kg/m ³	1995	1790	1667	1964	1664	1557	2200	1964	1664	1557	1222	1063	1628	1513	1510	1413	1610	1413
Tipping load straight	kg	123534	12276	12165	13489	13337	13236	13298	13315	13170	13063	14202	12646	12114	11986	11958	11868	12205	11868
Tipping load full turn	kg	11170	11100	11000	11241	11114	11030	11082	11096	10975	10886	11835	10538	10095	9988	9965	9890	10171	9890
Payload (50% FTTL)	kg	5585	5550	5500	5500	5490	5450	5500	5500	5490	5450	5500	5315	5048	4994	4982.5	4945	4990	4945
Maximum breakout force	kN	175	164	157	165	154	148	170	165	154	148	165	132	146	140	138	131	138	131
M Dump angle maximum	deg	45	43	45	43	43	43	43	43	43	43	43	43	43	43	43	43	43	45
N Roll back angle full height	deg	67	68	67	68	68	68	68	68	68	68	68	68	68	68	68	68	68	67
O Roll back at carry	deg	45	43	45	43	43	43	43	43	43	43	43	43	43	43	43	43	43	45
P Roll back at ground level	deg	39	38	39	38	38	38	38	38	38	38	38	38	38	38	38	38	38	39
Q Load over height	m	3.82	3.84	3.82	3.87	3.87	3.87	3.84	3.84	3.84	3.84	3.84	3.81	3.82	3.70	3.83	3.71	3.82	3.70
R Dump height (43° dump)	m	2.74	2.81	2.74	3.02	2.95	2.91	2.88	2.86	2.81	2.77	2.99	2.76	2.62	2.56	2.77	2.73	2.62	2.56
S Dig depth	mm	74	119	74	87	87	87	119	119	119	119	118	153	74	74	91	91	109	109
T Reach at dump height	m	1.18	1.27	1.14	1.10	1.16	1.21	1.19	1.22	1.27	1.32	1.08	1.28	1.30	1.26	1.21	1.16	1.30	1.26
V Pin height	m	4.11	4.15	4.11	4.15	4.15	4.15	4.15	4.15	4.15	4.15	4.15	4.15	4.15	4.15	4.15	4.15	4.15	4.11
Reach maximum (45° dump) - horizontal arm	m	2.14	2.11	2.18	1.95	2.01	2.05	2.04	2.07	2.11	2.16	1.93	2.12	2.26	2.30	2.15	2.19	2.26	2.30
R3 Maximum turn radius over shovel	m	6.53	6.57	6.59	6.53	6.57	6.59	6.59	6.61	6.64	6.67	6.74	6.87	-	-	-	-	6.72	-
Operating weight (includes 80 kg operator and full fuel tank (includes aux tank))	kg	17805	17880	17940	17889	17954	18003	17853	17935	18000	18049	17969	18346	18205	18264	18343	18379	18312	18379

ENGINE

Make & model : Cummins QSB 6.7 168 kW
CEV Stage IV Diesel engine

Type : Common Rail direct injection (CRDI), Water cooled diesel with aftertreatment system

Engine aspiration : Turbocharged & charge air cooled

Capacity (Ltrs.) : 6.7

No. of cylinders : 6

Max. gross power : 168 kW(225hp)@2200 RPM

Max torque : 1186 Nm @ 1300 RPM

Low idle RPM : 950±25z

STANDARD CAB

- Resiliently mounted ROPS/FOPS structure (tested in accordance with EN347:2008/EN3449: 2008 (Level 2)).
- Entry/exit is via the large rear-hinged door, grab handles giving 3 points of contact and anti-slip inclined steps.
- Forward visibility through a curved, laminated windscreen with lower glazed quarter panels, two mirror and non-heated exterior mirrors.
- Instrumentation analogue/digital display gauges along with full colour LCD screen including selectable machine and operator menus along with service and diagnostic screens.
- Heating/ventilation provides balanced and filtered air distribution throughout the cab via a powerful 8 kW capacity heater, with air conditioning and climate control system as options.
- Provision of speakers and antenna for radio fitment (radio/CD not included).
- The cab environment is positively pressurised preventing the ingress of dust including an in-cab recirculation filter.
- Fabric mechanical suspension seat as standard with various options including vinyl material, air suspension, heating and deluxe grammar actimo XXL air suspension seat with headrest, twin armrests, lumbar support, backrest extension, heating and full adjustment.

Coat hook, cup holder and additional storage space.

Fuse box positioned at the rear for access to fuses, relays and diagnostic connectors.

TRANSMISSION

4 wheel drive automatic Power shift transmission electrically operated selector and gear change incorporating a speed inhibitor and modulation for responsive on-the-move direction and ratio changes. Single stage integral torque convertor.

Type : 4 Wheel drive, Automatic
4 speed transmission

Make & Model : Ergo power ZF 4WG190

AXLES

Type : Limited slip differential

Make and model : Front- ZF MTL 3095 II
Rear - ZF MTL 3085 II

Overall axle ratio : 24.667

Rear axle oscillation : ± 12.5°

Bias ratio : 30%

SPEEDS

Max. speeds in each gear	Forward	Reverse
1st Gear	6.5	6.85
2nd Gear	12.8	13.49
3rd Gear	23.77	26
4th Gear	38	NA

STEERING

- Q-Amp hydraulic system with steer priority valve operating at 190 bar to provide smooth, low effort response.
- Steer ram located high in chassis to provide protection from damage. Adjustable steering column. Steering angle ±40°

ELECTRICALS

System voltage	Volt	24V
Alternator output	Amp hour	28V 120A
Battery capacity	Amp hour	2 x 12V 900CCA

MULTI MODE FUNCTION

- Power mode for high productivity
- Eco mode for fuel economy

BRAKES

Hydraulic power braking on all wheels, operating pressure 80 bar (1160psi). Dual circuit with accumulator back-up provides maximum safety under all conditions. In board mounted, oil immersed, multi-plate disc brakes with sintered linings reduce heat build up. Wheel speed braking improves performance and reduces wear. Parking brake, electro-hydraulic disc type operating on transmission output shaft.

TYRES

Tyre size	23.5x25 20PR	23.5x25 (crossply)	23.5R25 (radial)
Manf.	BKT/CEAT	CEAT	CEAT
Type	L3	E3/L3	E3/L3
Rating	20PR	20PR	1*
Operating wt.	18000 kg	18200 kg	18400 kg
Vertical mm	-	+26	+24
Width mm	Tubless	Tubetype	Tubless

HYDRAULICS

Pump type		Variable displacement Piston Pump- Load sensing
Pump 1 max. flow	l/min	132
Pump 1 max. pressure	bar	250
Pump 2 max. flow	l/min	94
Pump 2 max. pressure	bar	310
Hydraulic cycle times at full engine		
Arms raise (full bucket)	Seconds	6.0
Bucket dump (full bucket)	Seconds	1.9
Arms lower (empty bucket)	Seconds	3.7
Total cycle	Seconds	11.6

SERVICE CAPACITIES

Hydraulic tank : 180 L

Fuel tank : 280 L

Engine oil pump : 18 L

Transmission oil system : 38 L

Axle oil (front) : 35 L

Axle oil (rear) : 35 L

DEF tank capacity : 75 L

Engine coolant system : 38 L

STANDARD ACCESSORIES & FEATURES

- Return to dig
- Boom kickout
- 12V converter
- Sun visor and interior mirror
- Left hand and right hand rearview mirror
- Front light guard
- Tail lamp guard
- LiveLink
- Front screen guard
- Cabin fan
- FM radio with speakers
- Beacon

OPTIONAL EQUIPMENT

- 2.5 cu.m iron ore bucket, 3.5 cu.m bucket, 5 cu.m bucket
- Centralised lubrication system
- Smooth Ride System (SRS)
- Reversible fan
- 3 Spool option valve
- Quick hitch (3 spool)
- 24V socket in cabin
- Heated mirror
- Cold start kit
- Emergency steer pump
- Rearview camera and mirror
- Cigarette lighter
- Additional work light
- White noise horn
- Air suspension+heated seat
- Radial tyre & tube tyres

AFTER TREATMENT

DOC+DPF+SCR single module canister

All dimensions may vary within 1.5% of nominal value. Photographs depicted may include optional equipment. Design & specifications are subject to change without prior notice or obligation.